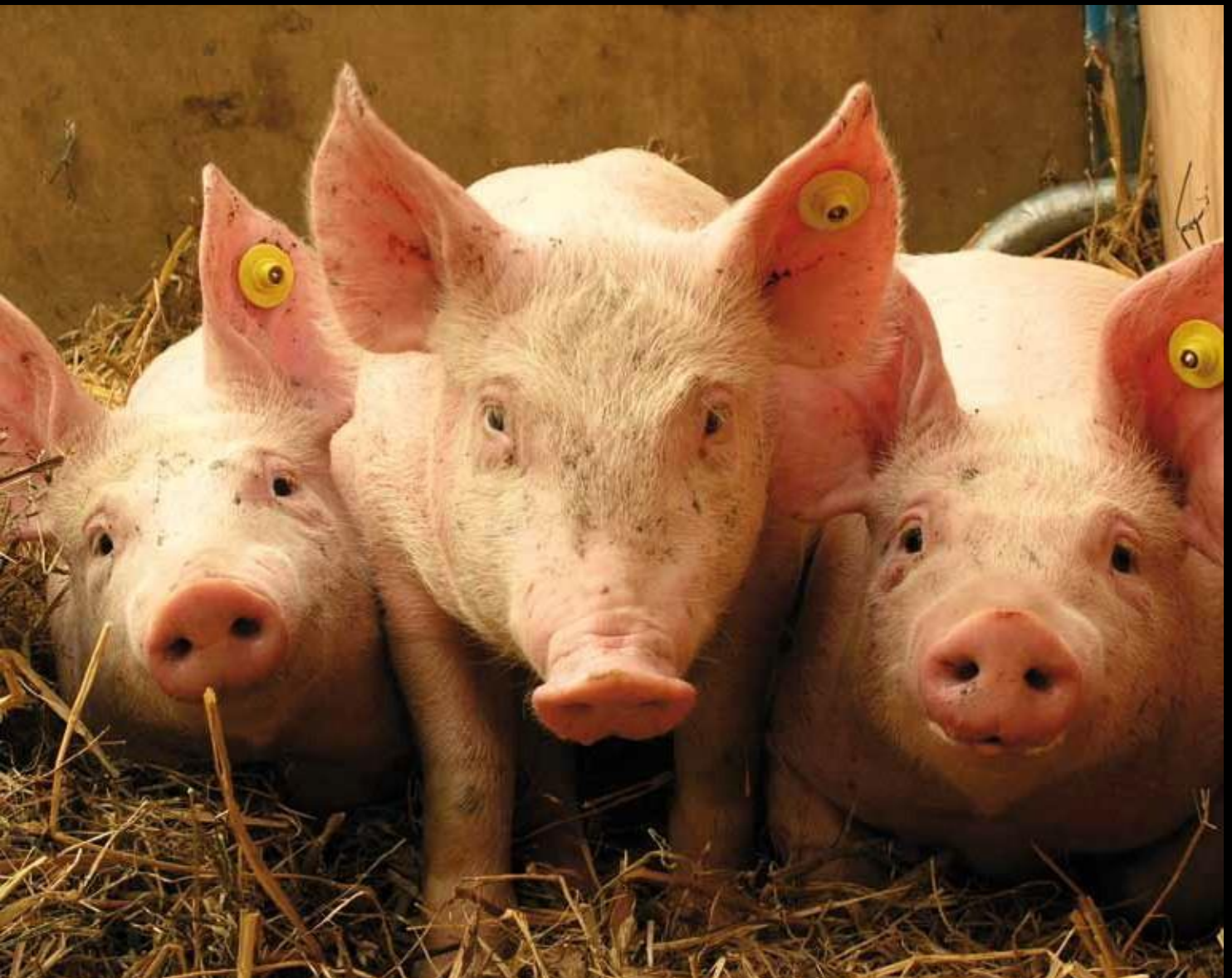


PRRSV ELISA DETECT and TYP NA/EU

Detection of PRRSV antibodies and differentiation in North America or EU type



PRRSV ELISA DETECT and TYP NA/EU | Detection of PRRSV antibodies and differentiation in North America or EU type

Features

- f TWO NEW ELISA based on a mixture of PRRSV antigens.
- f Selection of anti PRRSV antibody positive sera by PRRSV DETECT ELISA.
- f Differentiation of these sera in NA or EU type by PRRSV TYP NA/EU ELISA.
- f Monitoring of the antibody titer caused by vaccination or infection.

Background

The porcine reproductive and respiratory syndrome virus (PRRSV) causes the most important economical loss in pig industry. Several vaccination programs are trying to raise immunity of the flocks. We have developed a new ELISA-based test for high sensitive and high specific detection of PRRSV and differentiation between PRRSV Type I (EU-Type) and Type II (NA-Type).

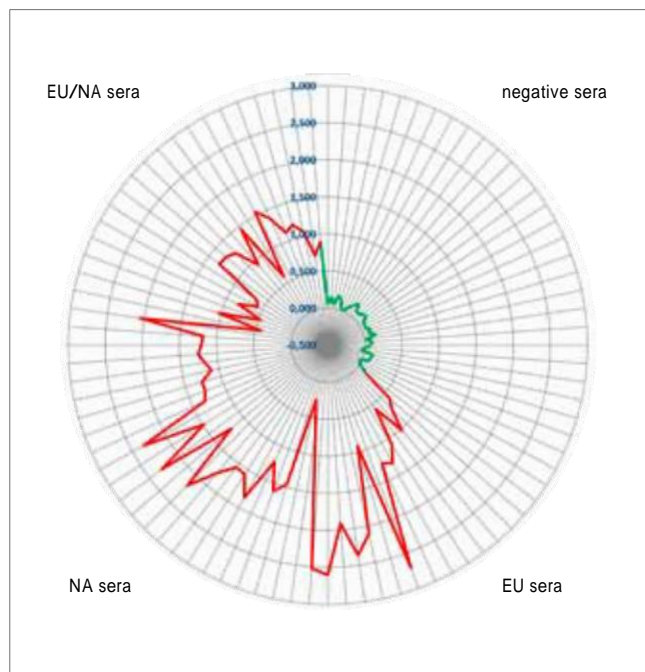
Applications

- f Easy and fast new ELISA for screening of swine sera for PRRSV antibodies and for evaluation of positive signals for PRRSV type I or II type response.
- f New and specific mixture of virus proteins for sensitive and specific finding of antibodies in all phases of immune response.
- f Fully comparable in ring tests of PRRSV sample sets to other ELISA methods.
- f Clearly differentiation between PRRSV Types of NA or EU strains.
- f Monitoring of antibody titres caused by vaccination or infection.

Conclusion

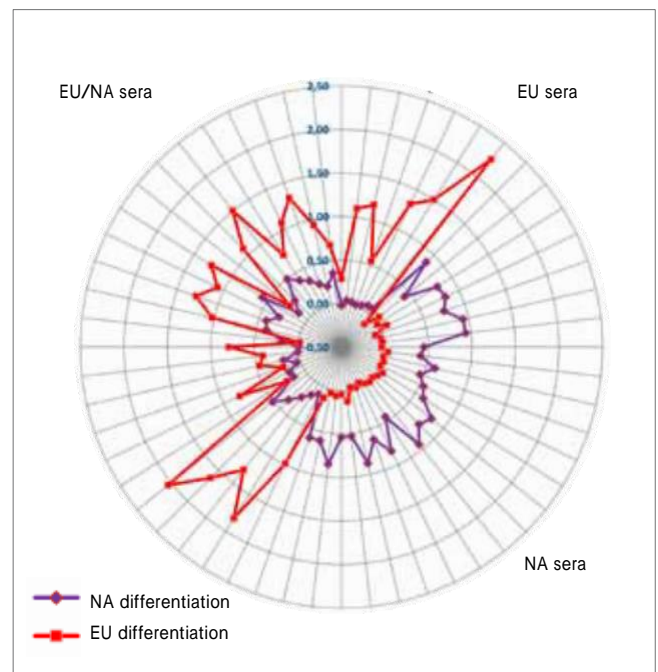
Our new PRRSV assays present unique solution on the market for PRRSV antibody detection and differentiation into type I or II - it saves costs for testing labs and make work easier with one system from one supplier.

Graphic 1



- Detection of PRRSV antibodies in sera from different origin (n=56) compared to negative sera (n=32).

Graphic 2



- Differentiation of PRRSV positive sera (n=56) into EU, NA or EU/NA type.